

Technical Information

Dressing Rooms & Offices

- All Dressing Rooms have private bathrooms with showers
 - o Dressing Room A 13'6"x12' Bath 7'4"x12'
 - o Dressing Room B 13'6" x 12' Bath 7'4"x12'
 - o Dressing Room C 15'8"x12' Bath 6'8"x12'
 - o Dressing Room D 12'x10'4" Bath 6'8"x12'
 - o Dressing Room E 8'7"x10'4" Bath 6'8"x8'7"
-
- Tour Production Offices – (2) 12'x10'6" and (1) 8'7"x10'4"
 - Men's and Women's Crew bathrooms with showers

Communication

- Backstage dressing room and production areas are equip with wireless access
- Phone lines can be set-up upon request in all rooms

Backstage Catering

- Full Kitchen
- Dining Room 17'8"x28'8"

Stage

- Main Deck is 49'x100'-Standard CAD is attached

Rigging

- 2,000 lbs at each point
- 4,000 maximum along each beam
- 100,000 lbs total maximum load
- Rigging plot attached
- 56' to rigging grid

Electrical

- (2) 800 Amp 3 phase services for lighting located stage right near loading dock
- 400 Amp 3 phase service and (1) 200 Amp 3 phase service located stage left
- Separate 200 Amp 3 phase and (1) mp 3 phase service located rear of stage
- Cable Trough from downstage edge to mix
- Shore Power is located in each bus parking space along with a water hook-up

Loading Dock

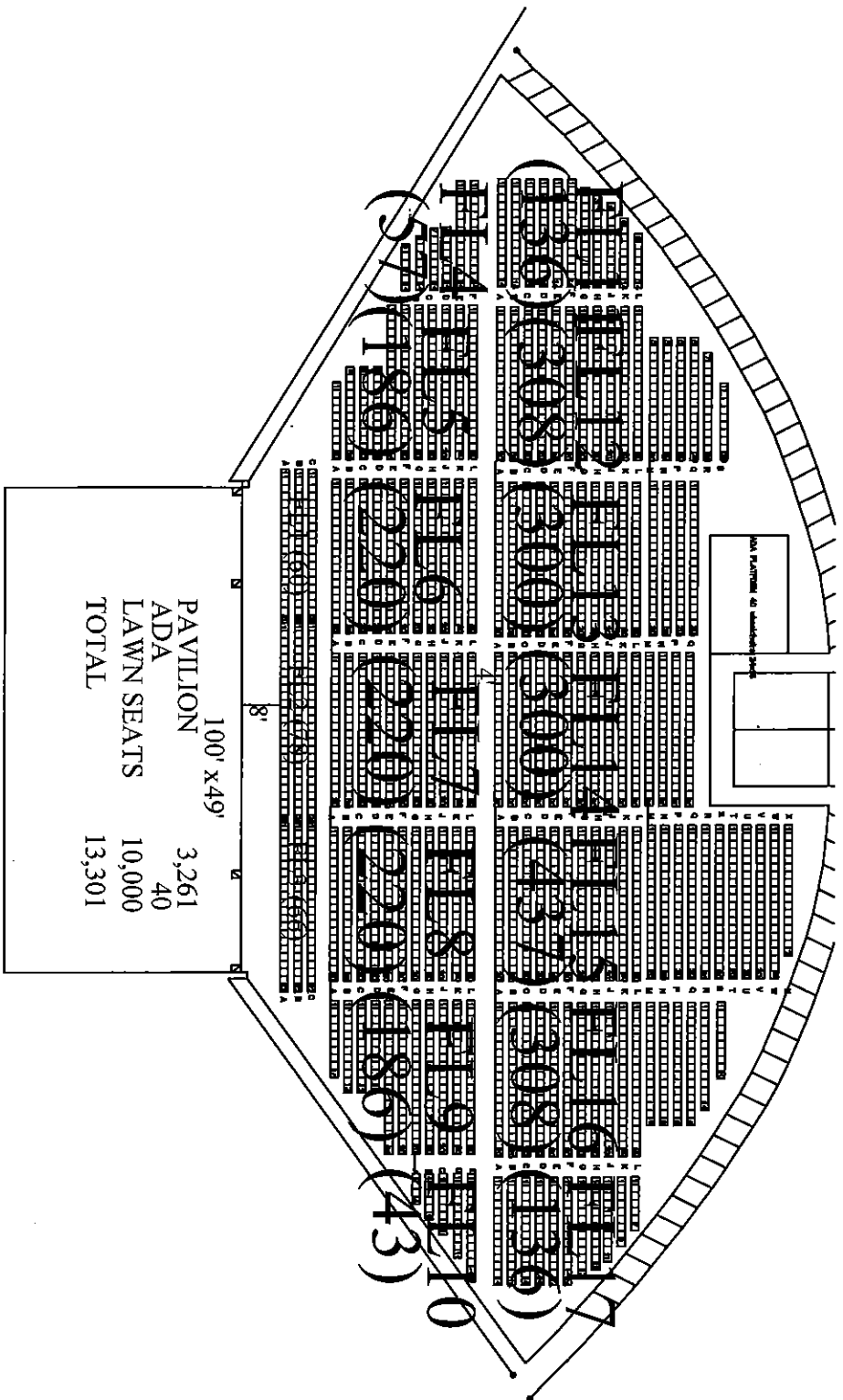
- Dimensions: 36' Long x 36' wide
- 4' wide stair access from ground
- 36" door to stage
- 12' wide x 14' high rollup door
- Capacity to unload 2 trucks at a time

Mix Position

- 30' wide x 20' deep
- Permanent top for protection from the elements
- Located 90' from stage

Bus and Truck Parking Backstage

- Paved parking for 10 buses/trucks (additional truck parking available in park)
- Water and Shore power is available in all bus parking spaces



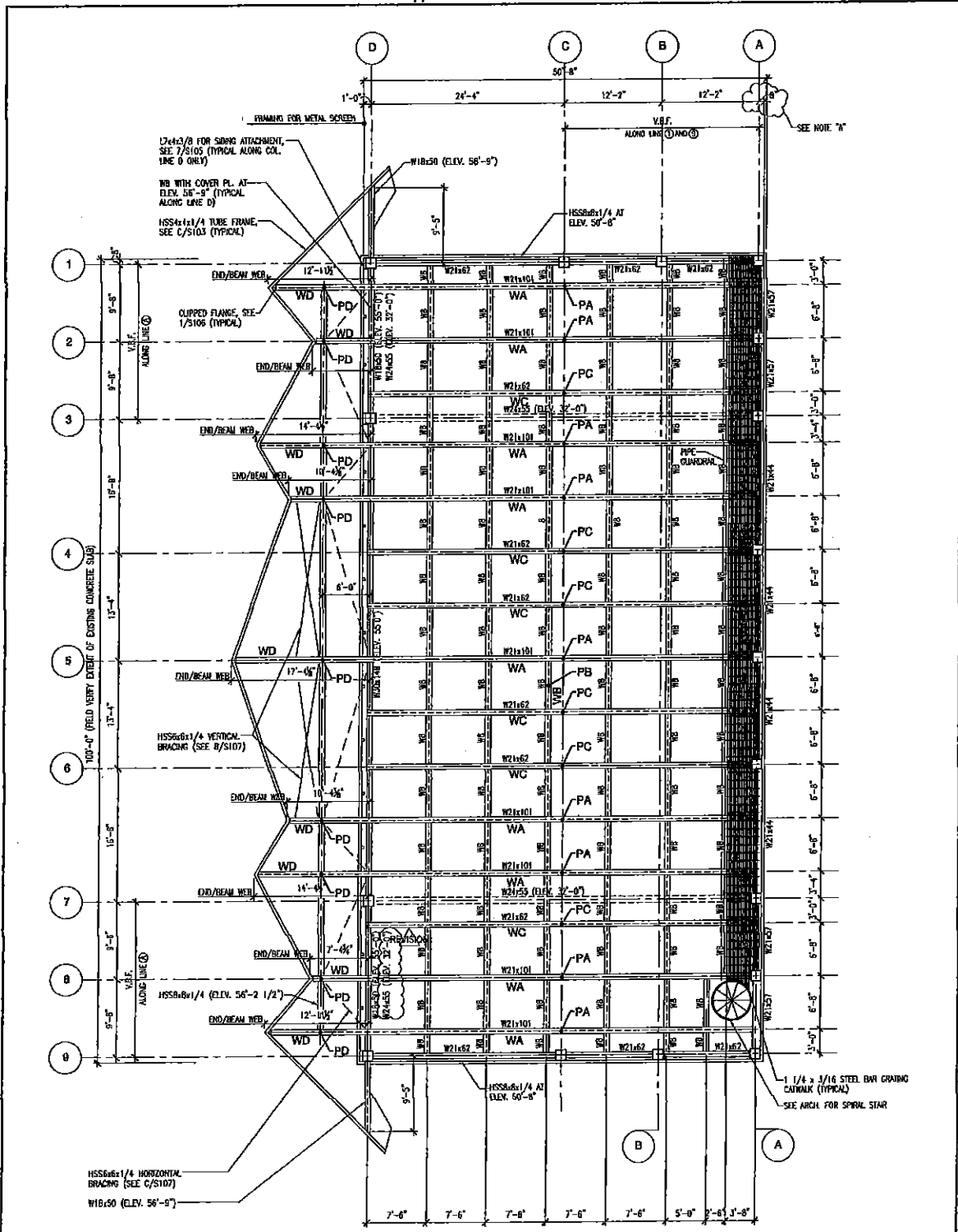
E14 (57) (186) (220) (220) (220) (220) (86) (13)
 E15 (5089) (300) (300) (300) (300) (300) (300) (300)
 E16 (5089) (300) (300) (300) (300) (300) (300) (300)
 E17 (5089) (300) (300) (300) (300) (300) (300) (300)

ADA SEATING
 ADA SEATING



Arrowood & Arrowood, PC
 412-B Pettigru St.
 Greenville, SC 29601
 864.233.9383 (t)
 864.232.7855 (f)

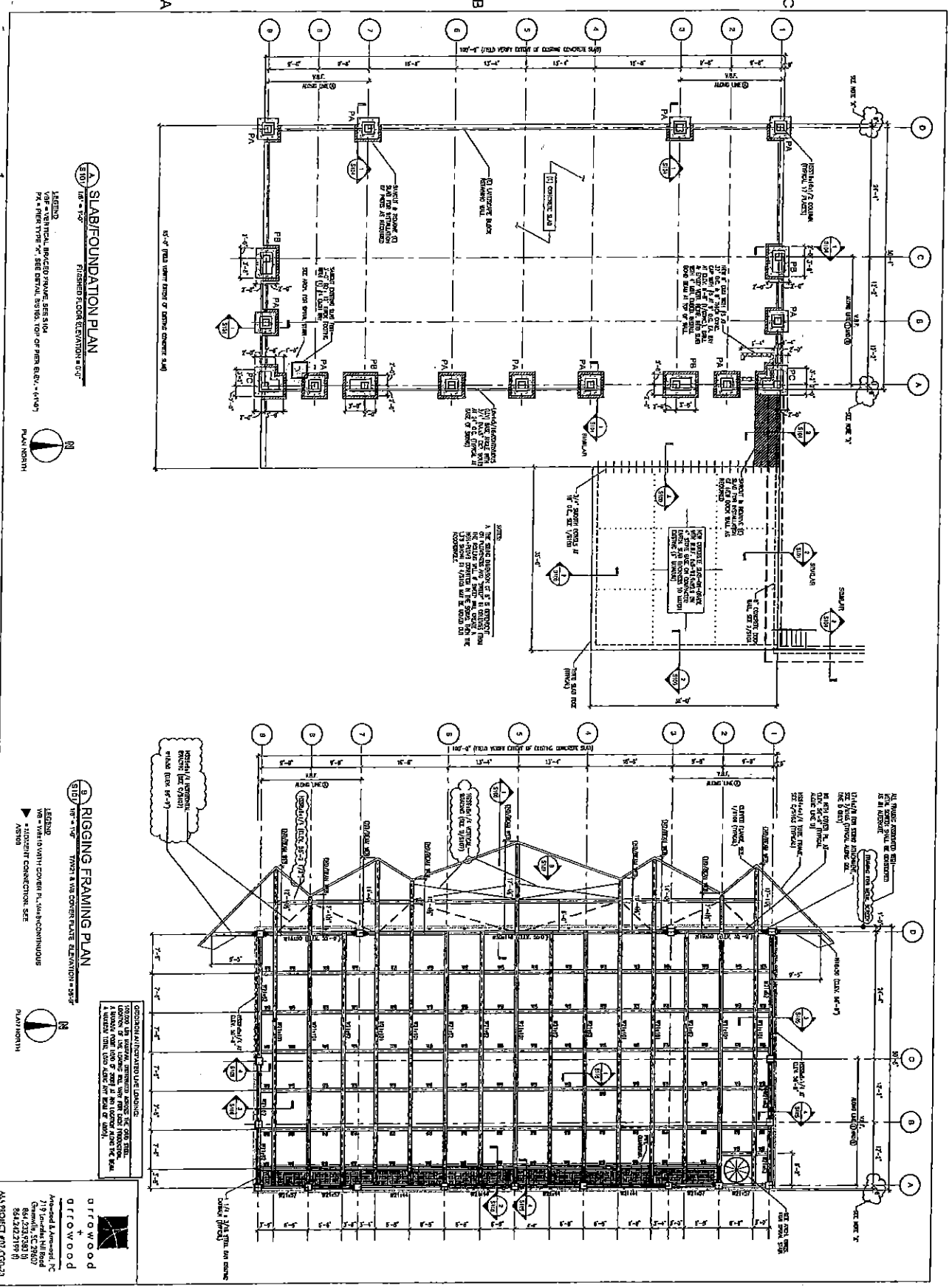
Heritage Park PROJECT	Summey PROJECT ENGINEER
07-CGD-23 PROJECT NO.	PROJECT DESIGNER
May, 2008 DATE	SK1/1 SHEET



TYPE	BEAM WHERE APPLIED	ALLOWABLE LOAD (KIPS)	NOTES
PA	W21x101	10 KIPS	AT MIDSPAN
PB	WBx10	4 KIPS	TYPICAL AT WB
PC	W21x62	6 KIPS	AT MIDSPAN
PD	W21x101	4 KIPS	

NOTES:
 1 KIP = 1000 POUNDS
 POINT LOADS & UNIFORM LOADS SHOWN CANNOT ACT SIMULTANEOUSLY ON THE BEAM NOTED.
 PLEASE CONTACT ARROOOD & ARROOOD, PC IF A BEAM WILL BE LOADED WITH A UNIFORM LOAD & POINT LOAD.

TYPE	BEAM WHERE APPLIED	ALLOWABLE LOAD (KIPS/FT)	NOTES
WA	W21x101	0.75 KIPS/FT	AT MIDSPAN
WB	WBx10	0.6 KIPS/FT	TYPICAL AT WB
WC	W21x62	0.25 KIPS/FT	AT MIDSPAN
WD	W21x101	0.25 KIPS/FT	



<p>CRAIG GAUDEN DAVIS Architects</p> <p>1300 North Main Street Greenville, SC 29602 Phone: (864) 232-9100 Fax: (864) 232-9101 Email: info@craiggauden.com</p>		<p>THIS COPYRIGHTED DOCUMENT IS AN INSTRUMENT OF SERVICE AND SHALL NOT BE REPRODUCED, EITHER WHOLLY OR IN PART, WITHOUT WRITTEN PERMISSION FROM THE ARCHITECT.</p>
<p>HERITAGE PARK AMPHITHEATER CITY OF SIMPSONVILLE</p>		
<p>DATE: 12/27/2017 DRAWN BY: [Name] CHECKED BY: [Name]</p>		
<p>ISSUE: CONSTRUCTION DOCUMENTS</p>		
<p>DATE: 12/27/2017</p>		
<p>DESCRIPTION: [Description]</p>		
<p>PROJECT NO: S101</p>		
<p>FOUNDAION & RIGGING PLAN</p>		
<p>S101</p>		

ORFWOOD
 Architectural
 719 Riverside Hill Road
 Greenville, SC 29607
 864.232.5388
 864.232.1779

AS1 PROJECT #17-000324